



Hitechcons
Building the future with high technology

2023

CATALOG



HiTechCons Vietnam

HiTechCons.com

1/1/2023

HiTechCons.com| 1 Mission

HiTechCons International as a supplier of building materials with high technology is to provide innovative products and solutions to the construction industry. The company aims to leverage the latest advancements in technology to offer components and materials that are energy-efficient, environmentally sustainable, durable, and cost-effective. HiTechCons.com strives to be a reliable partner to builders, contractors, architects, and engineers by supplying them with high-quality products that meet their needs and exceed their expectations. The company places a strong emphasis on customer service and satisfaction, working closely with clients to



understand their specific requirements and matching them with the right products. Ultimately, HiTechCons.com seeks to contribute to the growth and advancement of the construction industry by providing cutting-edge building materials that enable efficiency, safety, and sustainability in construction projects.

HiTechCons.Com| The Vision

HiTechCons International is committed to becoming a leading supplier of building materials with high

technology. Our vision is to revolutionize the construction industry by providing innovative and cutting-edge products to contractors, builders, and architects around the world. We believe that by integrating technology into our products, we can significantly enhance the quality, efficiency, and sustainability of building projects. As a company, we strive to stay ahead of the curve by investing in research and development that enables us to create products that are not only functional but also environmentally friendly. Our aim is to offer our customers a comprehensive range of building materials that meet the highest standards of quality, safety, and performance.

At HiTechCons International, we are committed to delivering exceptional customer service and maintaining strong relationships with our clients. Our goal is to be a reliable partner that provides value-added solutions to the challenges faced by the construction industry.

Contents

| | |
|--|----|
| Vinyl Wall Base..... | 3 |
| Contraction Joints | 6 |
| Guidelines for planning joint locations | 7 |
| Stainless Steel Tile Trim | 9 |
| HiTechCons stainless steel straight edge tile trim | 10 |
| HiTechCons stainless steel square-shaped tile trim | 11 |
| HiTechCons Stainless Steel Corner Trim..... | 11 |
| When you are selecting the color..... | 12 |
| Tainless Steel Bullnose Tile Trim..... | 13 |
| Architectural Tyle - Bullnose-Gold Mirror- Stailless Steel Tile Trim | 14 |
| The HiTechCons 8k-Mirror Stainless Steel Bullnose Tile Trim | 15 |
| Architects typically use HiTechCons Hairline Stainless Steel Tile Trim | 17 |
| Stainless Steel Square Tile Trim..... | 18 |
| The HiTechCons Square Stainless Steel Tile Trim | 18 |
| Architect Style- 8K-Mirror Stainless Steel Square | 18 |
| Architectural Style - Hairline-Stainless Steel - Square..... | 19 |
| Architectural Style- Gold Mirror Stainless Steel Square Tile Trim..... | 20 |
| Aluminium Tile Trim | 22 |
| Hitechcons Aluminum Tile Trim | 22 |
| J-Shaped Trim | 25 |
| Corner Render Bead..... | 27 |
| Bullnose render bead..... | 29 |
| Sharp Render Bead | 30 |
| Render Groove..... | 31 |
| HiTechCons offers a wide range of uPVC Render Groove..... | 32 |

Vinyl Wall Base



Vinyl Wall Base is the perfect solution for protecting and enhancing the base of your walls. Made of durable, high-quality vinyl, this product offers both durability and flexibility for easy installation. Vinyl Wall Base helps to prevent scuffs, dents, and scratches from furniture, shoes, and other objects. Its sleek design showcases a modern style and helps to unify your walls with your

flooring. The vinyl material is easy to clean and maintain, making it ideal for high-traffic areas and commercial spaces. It's available in a wide range of colors to complement any decor. Vinyl Wall Base is a cost-effective way to add a finished look to your walls while also protecting them from everyday wear and tear and giving your space a clean and polished look.

Vinyl wall base is a durable and affordable material that is often used in both commercial and residential buildings. It is available in a wide variety of colors and patterns, making it a versatile choice for interior design. When it comes to architectural style,



vinyl wall base can complement a range of aesthetics. In modern or minimalist spaces, a straight and simple vinyl base can provide a clean and contemporary finish.

In traditional or classic styles, a more detailed and textured vinyl base can add depth and interest. It can also be used in industrial-inspired designs, where exposed pipes and walls are part of the style. Overall, vinyl wall base offers an easy and practical way to add a finishing touch to any interior space while also protecting walls from scuff marks and damage.



Vinyl wall base comes in a variety of colors, each with its unique aesthetic appeal. The most popular colors are black, silver gray, almond, and white. Black tends to create a dramatic contrast against light-colored walls and is often used in modern and industrial spaces. Silver gray is a versatile color that coordinates well with various design styles and is often used in commercial buildings. Almond is a warm and neutral color that works well in traditional or rustic settings. White is the most popular and commonly

used color for vinyl wall base, and its clean, crisp appearance makes it a popular choice for a range of interior designs. When choosing a color, consider other elements in your space, such as wall color, flooring, and furniture, to ensure that the vinyl wall base complements the overall design scheme.

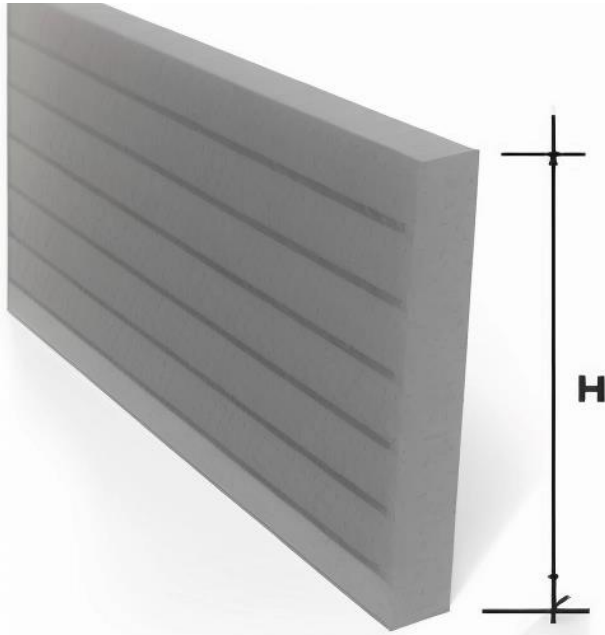
This product is available in two different sizes: 10.16 x 1828.8 cm and 10.16 x 609.6 cm. These measurements are given in centimeters (cm). The first size option measures 10.16 cm in width and 1828.8 cm in length, while the second option measures 10.16 cm in width and 609.6 cm in length. Customers can choose the size that best fits their needs based on the space they have available to decorate or cover. Whether you need a larger size for a bigger project or a smaller size for more precise coverage, these size options provide flexibility and convenience.

To purchase a product on HiTechCons.com, simply follow these steps:

1. Go to HiTechCons.com and browse their selection of products.
2. Select the desired product and add it to your cart.
3. Once all desired products are in your cart, proceed to checkout.
4. Enter your shipping and billing information as prompted.
5. Review your order summary and make payment using the provided payment options.
6. Once payment is confirmed, HiTechCons.com will notify you of your order confirmation and shipment tracking information.

Make sure to read the product descriptions and shipping information carefully before making your purchase. If you encounter any issues, customer service representatives are available to assist you through the process.

Contraction Joints



A contraction joint, also known as a control joint, is a type of joint used in construction to control the potential cracking of concrete or other building materials due to shrinkage and expansion caused by changes in temperature, moisture, or other environmental factors. The joint is typically placed in areas of the structure where such cracking is most likely to occur, such as in large concrete slabs, walls, or floors.

By placing a contraction joint, the concrete or other material is

allowed to move and expand without causing cracks. This is important because without control joints, cracking can compromise the structural integrity of the building and make it structurally unsound. Additionally, without contraction joints, aesthetic considerations may also be an issue since cracking can impact the appearance of the building. Therefore, including contraction joints in construction projects is a crucial step in ensuring the durability, safety, and overall appeal of a structure.

When planning the locations for contraction joints in a building, it is important to follow certain guidelines to ensure the structural integrity and longevity of the building. First, contraction joints should be placed in areas where natural cracks or joints are likely to form, such as at changes in plane,



changes in materials, or where expansion and contraction occurs due to temperature or moisture changes. Second, the spacing of contraction joints should be based on

the building materials and the local climate, with larger spacing in areas with less extreme temperature or moisture fluctuations. As for which building code to use, it depends on the location of the building. In the United States, the International Building Code is widely adopted and provides guidance on contraction joint placement, but individual states or municipalities may have their own regulations that should be followed. It is important to consult with a licensed engineer or architect to determine the best practices and building codes to follow for the specific location and type of building.

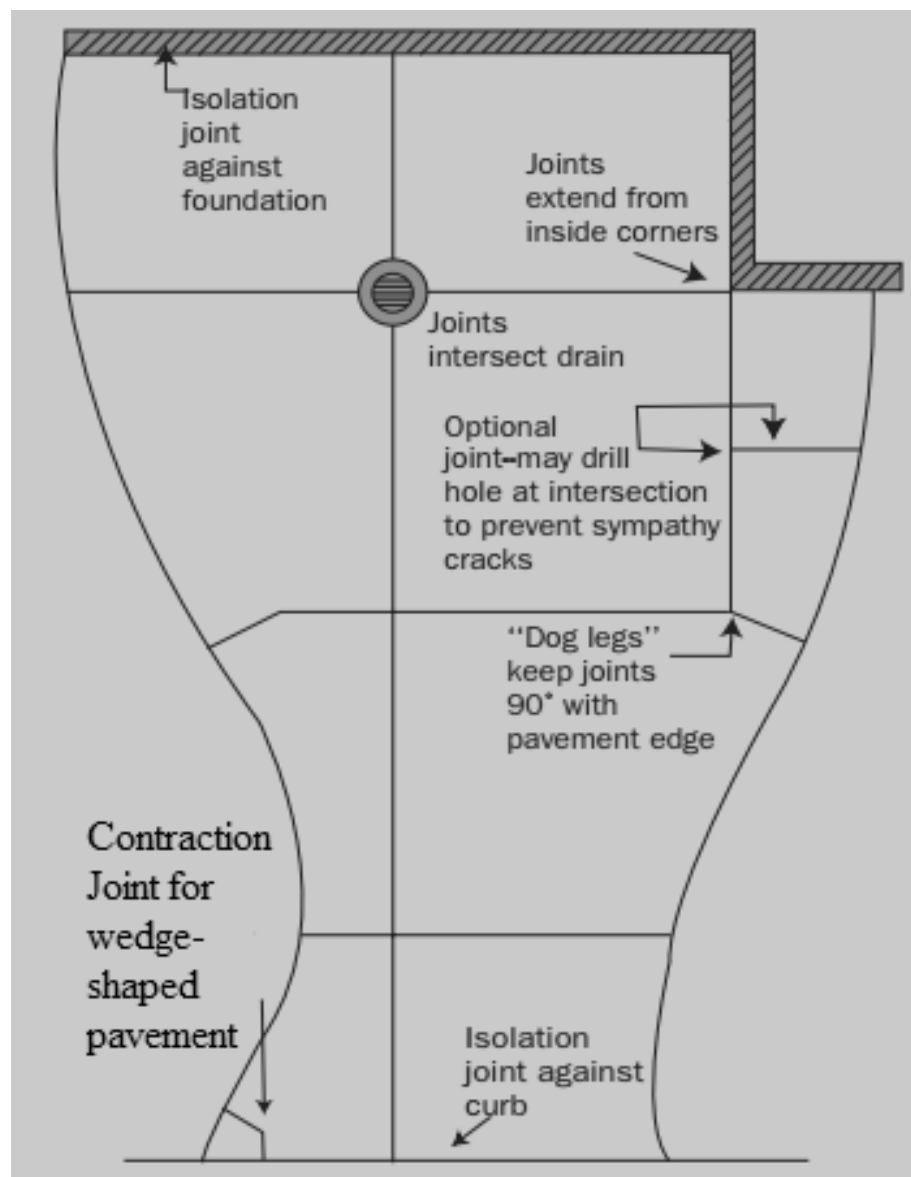
Guidelines for planning joint locations

Maximum joint spacing

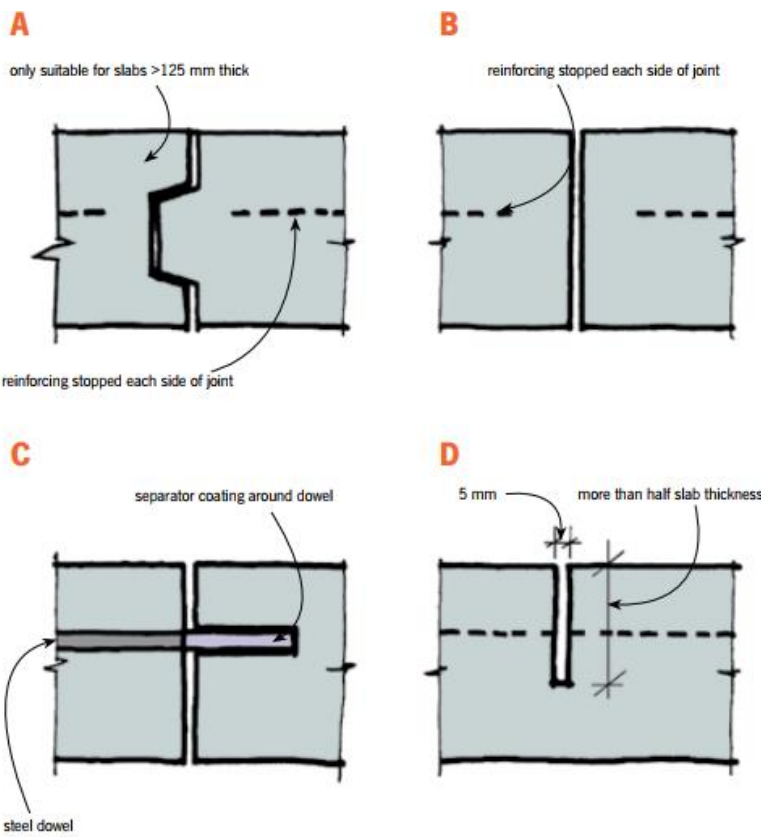
$L(m)$ is 24-36 times the slab thickness $t(m)$, in both the transverse and longitudinal directions. For example, a 10 Cm thick slab should have a contraction joint every 2.4-3.6m. Panels should never be greater than 4.6m in either direction, regardless of slab thickness. Note that this is the maximum joint spacing, but smaller panels can be used.

- **It's best to plan the joints to intersect** at 90 degrees or

greater. Never plan intersection angles to be less than 60 degrees.



- Contraction joints should terminate (at form lines or construction joints) at angles greater than 90 degrees. Never plan for angles less than 60 degrees.
- **When “dog legs”** are used at the end of a contraction joint to orient it in proper relation to a form line, they should be 30cm to 46cm long.
- Contraction joints should intersect any boxouts or drains.
- *Pavement shapes that cause planes of weakness, such as inside corners, should be included in the contraction joint layout.*



Isolation Joints

Also referred to as expansion joints, isolation joints should be placed wherever pavement abuts other features such as columns, curbs, foundations, or other immovable objects. Their purpose is to isolate the movement of the pavement. As a general rule, isolation joints should not be placed in the body of the pavement.

Aggregate Interlock

If contraction joints are placed according to the guidelines listed above, the crack that develops

beneath the contraction joint will be narrow, allowing aggregates on either side of the crack to interlock. This helps with load transfer and differential slab settlement. Crack widths must not exceed 0.04 inch for good aggregate interlock. Fewer contraction joints will result in greater crack widths and less load transfer.

Stainless Steel Tile Trim



Stainless steel tile trim is a popular choice for finishing off tile installations. It's durable, easy to maintain, and offers a sleek, modern look. There are several different types of stainless steel tile trim available, including straight edge trim, bullnose trim, and corner trim. Straight edge trim is the most common type and is used to finish off the edges of a tile installation. Bullnose trim is similar to straight edge trim but has a

curved or rounded edge. Corner trim is used at internal or external corners to give a neat and finished appearance. Stainless steel tile trim comes in a range of sizes, finishes, and thicknesses to suit different tile sizes and thicknesses. It's important to choose a trim that matches the style and color of your tiles to ensure a seamless and professional-looking finish.

HiTechCons
Stainless Steel Tile Trim is an excellent choice for all architects, developers, and contractors due to its unmatched quality and durability. The trim is made of high-quality



stainless steel that provides long-lasting protection against chipping, cracking, and other forms of damage.

Moreover, HiTechCons Stainless Steel Tile Trim offers a sleek and modern look which adds significant value to any construction project. It is versatile and can be used with any type of tile, making it the perfect choice for any application, from residential to commercial use.

This product is designed to withstand heavy traffic and high footfall, and it is easy to install, which saves time and money. Also, HiTechCons Stainless Steel Tile Trim provides a durable edge protection that improves the overall look and durability of any tiled surface.

Therefore, if you want a tile trim that lasts for an extended period and offers a perfect finish to your construction project, HiTechCons Stainless Steel Tile Trim is the best choice.



With **HiTechCons stainless steel bullnose tile trim**, you'll get protection for tile edges against damage and wear. The durable stainless steel material is resistant to rust and corrosion and complements any interior design style. Its bullnose shape provides a smooth transition on tile edges, reducing chipping and cracking – perfect for high traffic areas like bathrooms. The trim is also ideal for outdoor patios where temperature and

moisture changes may occur. This tile trim is the perfect solution for both style and functionality, ensuring the durability of your tile installation.



HiTechCons stainless steel straight edge tile trim is a high-quality, durable and easy-to-install option that adds functionality and a modern touch to any space. The trim provides a smooth, polished finish and resists scratches and stains, making it ideal for high-traffic areas in both residential and commercial projects. By using HiTechCons tile trim, you can ensure a superior finish that adds value and elegance to

your project.



HiTechCons stainless steel square-shaped tile trim is a type of finishing profile used in tile installations. It is an important component because it provides both functional and aesthetic benefits. Functionally, it helps to protect the edges and corners of the tiles from damage and chipping. Additionally, it provides a clean, professional and polished look to the tile installation, adding to the overall aesthetic

appeal of the design. HiTechCons stainless steel square-shaped tile trim is a premium option in the market and is highly durable, rust-resistant, and low maintenance. Its square-shaped design makes it suitable for use with larger tiles or to create a more modern and industrial look, while still complementing the surrounding décor. Overall, HiTechCons stainless steel square-shaped tile trim is an essential component in achieving a high-quality and long-lasting tile installation.



HiTechCons Stainless Steel Corner Trim is a protective material used to enhance the aesthetic appearance and durability of corners in walls and floors. It is made of high-quality stainless steel and features a strong adhesive that ensures a secure and long-lasting installation.

This trim is important as it not only adds a decorative element to any space, but it also serves to protect corners from damage. Especially in high-traffic areas, corners are prone to scratches and dents from constant contact with people, furniture, and other objects.

By installing HiTechCons Stainless Steel Corner Trim, you can ensure that your walls and floors remain in pristine condition for longer periods of time. Additionally, the trim is easy to clean and maintain, making it a low-cost, high-value solution for any space in need of protection and enhancement.



When you are selecting the color of a stainless steel tile trim, it is essential to consider the design style of your space. If you have modern decor or cool tones, a silver finish would be appropriate. On the other hand, if you have warm tones or a more traditional aesthetic, a gold or champagne finish would be more suitable. It is worth noting that 8K Mirror, Hairline, Stain, Gold Mirror, Champagne, and Gold Hairline refer to the textures or finishes of the stainless steel rather than the color.

8K Mirror has an extremely reflective finish, while Hairline has a patterned texture. Stain is a matte finish, and Gold Mirror has a golden reflective surface. Champagne has a subtle gold-toned finish, and Gold Hairline has a textured golden surface. To get the best result, choose the finish that adds up to your design style and your preferred level of shine. Finally, select the appropriate color.

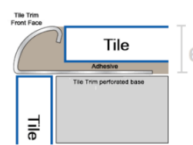
Tainless Steel Bullnose Tile Trim



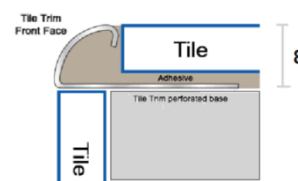
HiTechCons Stainless Steel Bullnose Tile Trim is an excellent choice compared to other tile trims for a number of reasons. Firstly, bullnose tile trim has a rounded edge which is more aesthetically pleasing and creates a softer finish. This is particularly useful in areas where there may be children or seniors who are more prone to injury from sharp corners.

Secondly, HiTechCons Stainless Steel Bullnose Tile Trim is durable and long-lasting compared to square, corner or straight edge tile trims. Stainless steel is non-corrosive and resistant to wear and tear, so it will withstand heavy foot traffic and exposure to moisture. It's easy to clean and maintain, making it a popular choice for commercial and residential applications. Lastly, bullnose tile trim is versatile and can be used on various tile layouts including straight, curved and angled edges, making it a flexible solution for architects and builders.

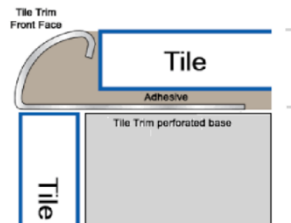
HiTechCons offers a variety of stainless steel bullnose tile trims to suit any tile installation project. Our stainless steel bullnose tile trims are available in various sizes, ranging from 6mm to 12mm in depth, and 2.5m in length. We have in stock trims suitable for tiles with thicknesses ranging from 5mm to 15mm.



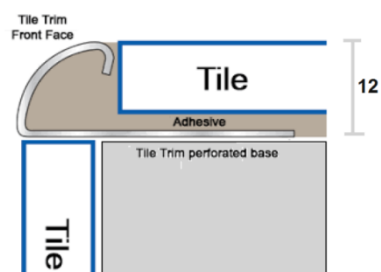
HIT6



HIT8



HIT10

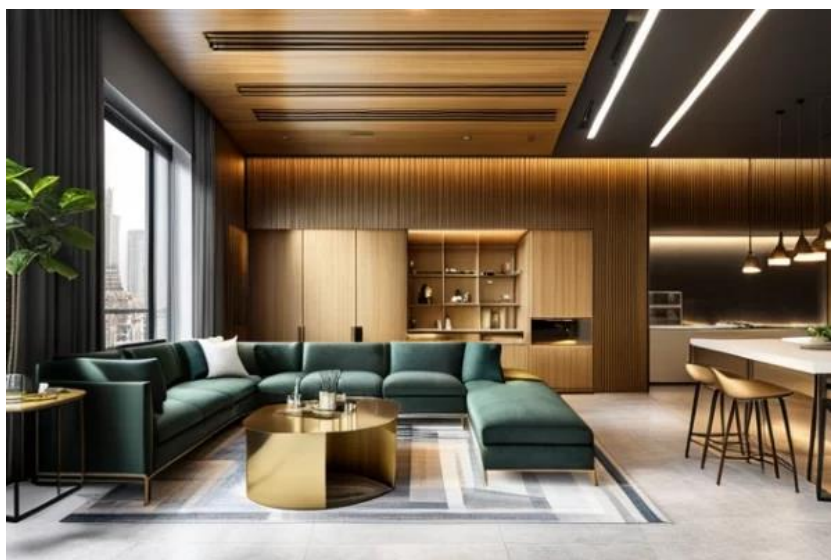


HIT12

The trims are made from high-quality stainless steel material, ensuring they are strong, durable, and corrosion-resistant. They come in a variety of finishes including polished, brushed, and satin, giving you options to create a

seamless finish that matches your tile design.

Our bullnose tile trims are designed to protect the edges of the tile from damage and chipping, while giving a neat and professional finish. They are easy to install using adhesive, screws or clips, making them a convenient and practical solution for any tile installation project. Choose HiTechCons for all your stainless steel bullnose tile trim needs.



Gold Mirror

demands of high-traffic areas.

The trim is crafted from high-quality stainless steel, which means that it can last a long time while still retaining its elegance. Additionally, it's a low-maintenance solution that saves you both time and money. With its round shape, this tile trim is perfect for breaking up the straight lines of your tile installation and adding more dimension to the space.

Another unique feature that adds to its overall allure is the beautiful gold mirror finish. This finish adds more sophistication and glamour to your interior design, ensuring maximum visual appeal. Additionally, the streamlined installation process and straightforward maintenance requirements make it easy to use and care for. If you're looking to elevate the refinement and allure of your interior space, the HiTechCons Gold Mirror Round Stainless Steel Tile Trim is the perfect option for you.

Architectural Tyle - Bullnose-Gold Mirror- Stainless Steel Tile Trim

The HiTechCons Gold Mirror Bullnose Stainless Steel Tile Trim is nothing less than an outstanding choice for both residential and commercial applications. This trim boasts of a contemporary and sophisticated design that is perfect for modern living spaces. Moreover, the exceptional durability and strength of this trim make it an incredibly reliable option that can endure the



8K Mirror

and emphasizes functionality and technological innovation .

Another style that would work well with the HiTechCons 8k-Mirror Stainless Steel Bullnose Tile Trim is the industrial style. This style features a raw and unfinished aesthetic, often incorporating metal and concrete elements .

In both modern and industrial styles, the HiTechCons 8k-Mirror Stainless Steel Bullnose Tile Trim would blend seamlessly with other metal finishes, glass elements, and sleek geometric shapes to create a cohesive and contemporary look.

The HiTechCons 8k-Mirror Stainless Steel Bullnose Tile Trim is a modern and sleek design that would complement contemporary and minimalist architectural styles. These styles are distinguished by clean lines, simple forms, and a focus on functionality. One popular architectural style that the HiTechCons 8k-Mirror Stainless Steel Bullnose Tile Trim would complement is the modern style. This style features simplified forms, neutral colors,



Gold Hairline

When it comes to finding architectural styles that are suitable for **HiTechCons Gold Hairline Stainless Steel Bullnose Tile Trim**, there are several options to consider. One popular option is modern or contemporary architecture, which embraces sleek and clean lines, and tends to use materials that are minimalist and sophisticated, such as stainless steel, glass, and concrete.

Another option to consider is industrial architecture, which often features exposed pipes, beams, and brick walls, with a focus on functionality and efficiency. **HiTechCons Gold Hairline Stainless Steel Bullnose Tile Trim** would complement this style nicely by adding a touch of elegance and shine.

Finally, for a more classic and elegant look, consider using **HiTechCons Gold Hairline Stainless Steel Bullnose Tile Trim** in a neoclassical or traditional architectural style. With its sleek lines and shiny gold finish, it would be the perfect addition to a space that celebrates timeless elegance and sophistication.

Architects typically use HiTechCons Hairline Stainless Steel Tile Trim to represent a modern and sleek style. The slim and simple profile of the trim gives a clean and subtle finish to tiled surfaces, providing a minimalist and contemporary look that is popular in both residential and commercial projects.



The hairline finish of the stainless steel is subtle and refined, creating a sophisticated aesthetic overall. The material's durability and resistance to corrosion make it practical for areas with high foot traffic and exposure to moisture.



Hairline

The utilization of HiTechCons Hairline Stainless Steel Tile Trim in architecture represents a focus on functionality and design simplicity, with a nod to modern technology and an appreciation for durable materials.

To purchase HiTechCons' Stainless Steel Tile Trim, follow these steps:

1. Visit the HiTechCons website or an authorized dealer's website to browse their tile trim options.
2. Choose the type of stainless steel trim you need based on size, shape, and finish.
3. Select the quantity you require and add it to your cart.
4. Proceed to checkout and provide accurate payment and contact information.
5. Review your order and make payment using available methods.
6. Once your order is processed, the HiTechCons team will pack and safely ship your tile trim to your shipping address.
7. Upon receiving your tile trim, inspect it carefully for any damage or defects. If any issues arise, contact HiTechCons' customer support for assistance.

Following these easy steps will allow you to purchase HiTechCons' stainless steel tile trim with ease.

Stainless Steel Square Tile Trim



The HiTechCons Square Stainless Steel Tile Trim is a high-quality and durable trim designed to protect and finish the edges of tile installations. Made from premium-grade stainless steel, it is resistant to corrosion and wear, making it ideal for high traffic areas. The trim has a square profile, providing a neat and professional finish that

complements any tile design. It measures 6mm to 12mm and is available in lengths of 2.5 meters, ensuring easy installation and minimal waste. Suitable for use in commercial and residential environments, the HiTechCons Square Stainless Steel Tile Trim is designed to withstand the rigors of everyday use while maintaining its sleek appearance. It is easy to maintain, requiring only occasional cleaning with a non-abrasive cleaner to keep it looking new.

Architect Style- 8K-Mirror Stainless Steel Square

The HiTechCons 8K-mirror Stainless Steel Square Tile Trim has a sleek and modern appearance that reflects a style suitable for industrial and contemporary architecture. Therefore, minimalist or modernist styles that emphasize clean lines, simplicity, and functionality are good options. In addition, the industrial style, which emphasizes raw materials and has an edgy and unfinished look, could complement the HiTechCons 8K-mirror Stainless Steel Square



8K Mirror

Tile Trim. The use of glass, concrete, and exposed steel would harmonize with the trim's stainless steel finish. Finally, contemporary or high-tech architecture would match the trim's futuristic look. The use of cutting-edge materials and technology, as well as functional and aesthetic combinations, would perfectly match the trim's sophisticated appearance.



Hairline

Architectural Style - Hairline-Stainless Steel - Square

HiTechCons' Hairline Stainless Steel Square Tile Trim is a modern finishing product that requires an equally modern and contemporary architectural style. One such style is minimalism, which is characterized by clean lines, monochromatic colors, and simplicity in design. Another style that would complement the HiTechCons trim is industrial, featuring exposed brick and pipes, metal accents, and an

unfinished look. Finally, modern-style incorporating glass, metal, and concrete elements could work well with the hairline stainless steel square tile trim. Ultimately, it's essential to choose a design that complements the trim while meeting the project's design goals.

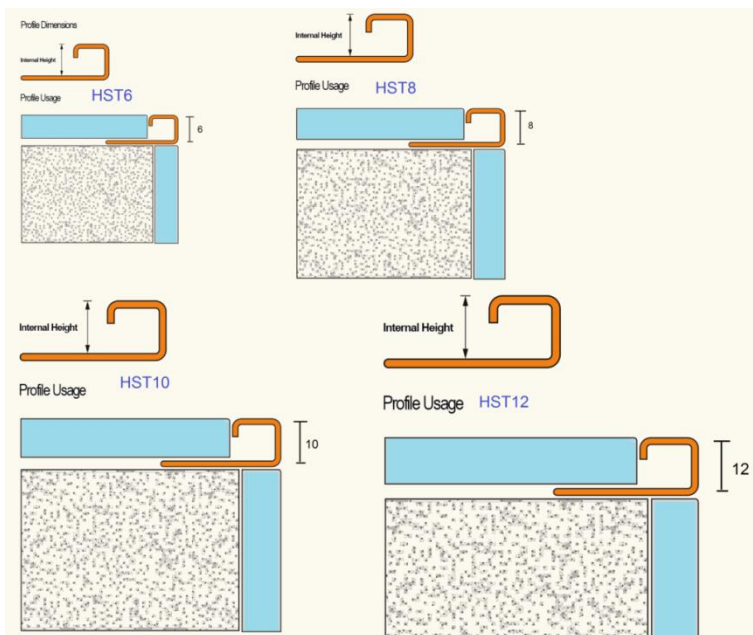
**Architectural Style- Gold Mirror
Mirror Stainless Steel
Square Tile Trim**

For a company like HiTechCons, a modern, sleek, and functional architectural style would be the best fit. The company deals with cutting-edge technology and innovation, which should be reflected in the design of its physical structure. A style that can achieve this is contemporary



Gold Mirror

architecture, which emphasizes simplicity, minimalism, and the use of innovative materials and techniques. Using glass and steel in the building's façade would give it a futuristic and high-tech appearance, while large windows would allow natural light to filter in, creating a bright and vibrant workspace. In addition, incorporating green elements such as living walls and energy-efficient technology would not only showcase the company's commitment to sustainability but also improve the overall well-being of its employees. A contemporary-style building will lend HiTechCons the professional and innovative image it needs to attract top talent and clients.



Stainless steel square tile trim is a popular choice for modern design and high-traffic areas where there is a lot of wear and tear. The trims come in various sizes, **including 6mm, 8mm, 10mm, and 12mm.**

The 6mm size is suitable for small areas such as bathrooms and kitchens. It provides a clean, simple, and

unobtrusive finish.

The 8mm size is a bit thicker and offers more protection against wear and tear. This size is ideal for larger indoor spaces such as foyers and living rooms.

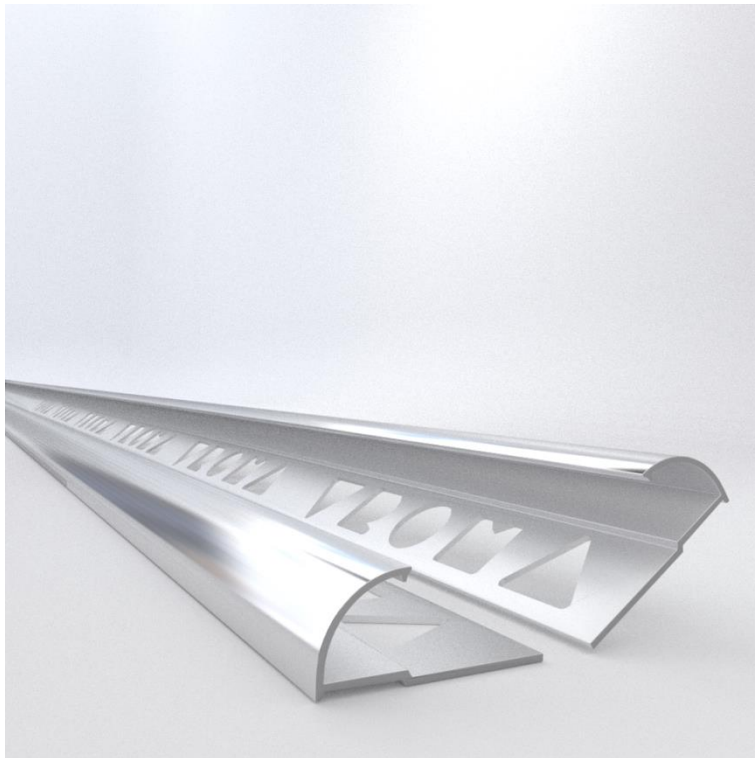
The 10mm size is a good choice for commercial areas like shopping malls, supermarkets, and airports, where there is heavy foot traffic.

The 12mm size is the largest option and provides maximum protection against wear and tear. It is perfect for industrial areas like factories and warehouses where heavy machinery is used.

Overall, the size of the stainless steel square tile trim should be chosen based on the size of the area, the level of foot traffic, and the expected level of wear and tear.

HiTechCons Square Stainless Steel Tile Trim can be purchased through various channels. One option is to visit their website and order directly from their online store. Another option is to go to a home improvement store that carries the HiTechCons brand and purchase it in person. Before making a purchase, it is essential to measure the area where the tile trim will be installed and ensure that the correct size and quantity are selected. Reading reviews or asking for recommendations from friends or professionals in the industry can also be helpful. Once you receive the product, follow the installation instructions carefully to guarantee that the HiTechCons Square Stainless Steel Tile Trim is installed securely and properly.

Aluminium Tile Trim



Hitechcons

Aluminum Tile Trim

is the ideal finishing touch for your tiling projects. Made from high-quality, durable aluminum, this trim protects the edges of your tiles from chips and damage while providing a sleek and polished appearance. Its low-profile design creates a minimalist aesthetic, and its versatility allows it to be used in a variety of settings, from residential to commercial environments. The easy installation process means that you can achieve a professional finish quickly and with minimal effort. Hitechcons

Aluminum Tile Trim is available in a range of sizes and finishes, making it an excellent choice for both new installations and renovation projects. This product is an essential component for creating a polished appearance while providing protection to the edges of tile work.

HitechCons

aluminum is a versatile material that is used across multiple industries due to its excellent mechanical properties. It is lightweight and corrosion-resistant, making it ideal for use in



construction for windows, doors, frames, and curtain walls. It is also popular in the transportation, electronics, and aerospace industries, where it is used to make

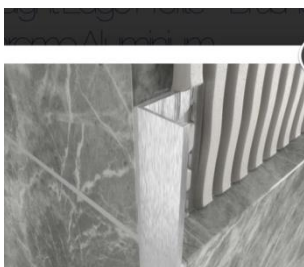
automotive parts, train bodies, marine components, aircraft frames, wings, fuselages, and computer casings.



Hitechcons' aluminum tile trim is a durable and attractive choice for many projects across various industries. It is commonly used in residential, commercial, and industrial buildings for its ability to withstand harsh environments. It provides an attractive finishing touch to tiled edges, protects against damage, and adds elegance to wooden and tiled floors. The trim is ideal for high-traffic areas, as it is rust-resistant and has a beautiful polished finish that enhances any project. Hitechcons' aluminum tile trim is a great option for upgrading or

maintaining floors.

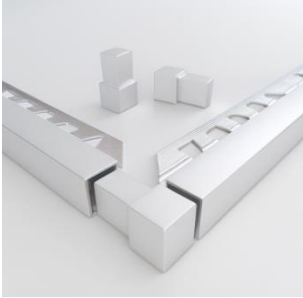
There are several types of aluminum tile trims available in the market, each with its unique features and functions. Some of the most commonly used aluminum tile trims include:



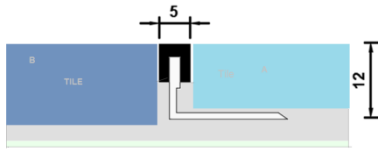
1. **L-Shaped Trim:** This type of trim is used for straight edges and corners of tiles.



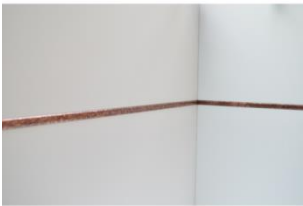
2. **Round Edge Trim:** It is used to provide a rounded edge to the tiles and to protect the edges from chipping and damage.



3. **Square Edge Trim:** It has a square-shaped profile and is used for corners of tiles.



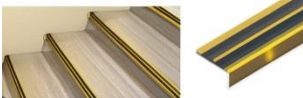
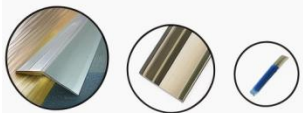
4. **J-Shaped Trim:** This type of trim is used at the junction where two different types of flooring meet.



5. **Listello Trim:** It is a decorative aluminum trim used to add accents to the tiles.



6. **Ramp Trim:** It helps to provide a smooth transition between two different floor levels.



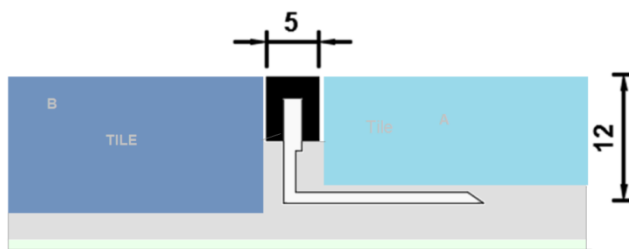
7. **Stair Nosing Trim:** This type of trim is used to protect the edges of stairs from wear and tear and to provide an anti-slip surface.

J-Shaped Trim



Hitechcons' J-Shaped Trim is a type of trim used in flooring installations when two different types of flooring meet. It is designed to sit between two surfaces at an uneven or misaligned level and create a smooth, finished edge that transitions from one surface to the other. The J-Shaped profile of this trim allows for seamless transitions between floorings, such as carpet to tile or hardwood to tile, by letting one flooring slip under the J-Shaped edge while

the other butts up against it. Often used in commercial and residential settings, particularly in high-traffic areas where flooring surfaces may face wear and tear or damage.



To use the Hitechcons J-shaped trim in tiling works, start by ensuring that the surface to be tiled is clean and dry. Apply the appropriate adhesive to the surface and lay the tiles, leaving a gap for the trim. Cut the trim to size using a hacksaw, allowing for a small overlap at the corners.

Then, insert the trim into the gap, ensuring that the J-shaped section sits flush with the surface of the tiles. Press the trim firmly into place and add more adhesive if necessary. Finally, finish the edges of the tiles using a silicone or grout. The Hitechcons J-shaped trim is a simple and effective tool that helps to achieve a neat and professional finish to any tiling project.

Hitechcons' aluminum J-shaped trim has several advantages over other similarly designed trims. First and foremost, it is made from high-quality aluminum, which makes it sturdy, durable, and rust-resistant. As a



result, it can withstand external conditions such as moisture, ultraviolet rays, and extreme temperatures .

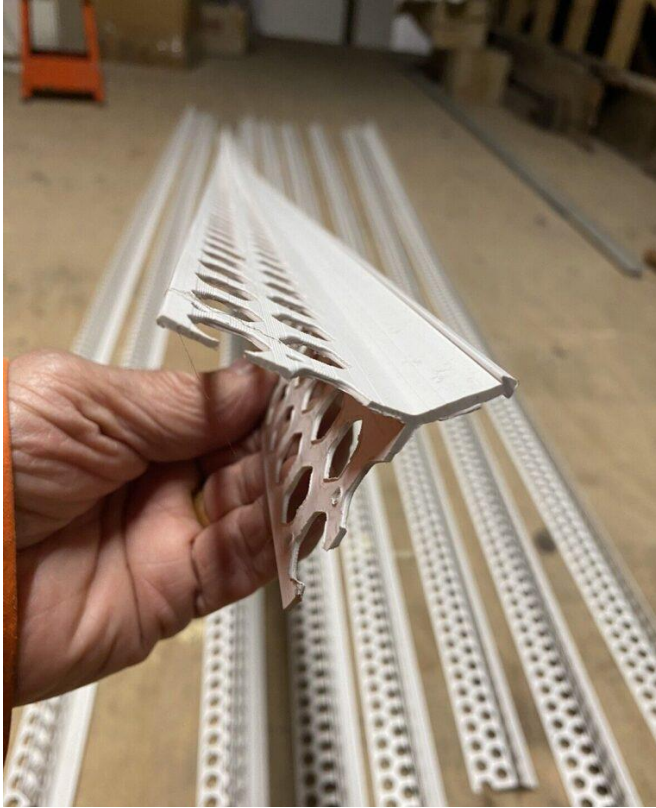
The J-shape of the trim also provides excellent protection to the edges and corners of the surface it's applied to, whether it's wood, concrete, or any other material. It is incredibly versatile and can be used in a range of applications like decorative finishes, door and window frames .

Another advantage is that it is lightweight, making it easy to handle, transport, and install. This can translate into time and cost savings for the user. Furthermore, the aluminum J-shaped trim comes in a variety of colors and finishes, allowing for customization to suit any project's ongoing style and design .

Finally, it requires minimal maintenance and is easy to clean, making it an ideal choice for use in both commercial and residential settings.

Aluminium J-shaped Trim can be purchased from various hardware stores and home improvement centers like Home Depot or Lowe's. Online retailers such as Hitechcons.com also offer a wide variety of options. Price can vary depending on quantity purchased and follow the link to the Hitechcons Shop by press the BuyNow button on this site.

Corner Render Bead



[Hitechcons Render Bead](#) – the ultimate external rendering solution for those who demand the best. Our product is not just any ordinary render bead, but a carefully crafted masterpiece designed to provide unbeatable quality and durability. With a uPVC outer casing, our render bead offers effortless installation and adds an exceptional touch of sophistication to every project. Professionals and DIY enthusiasts can trust [Hitechcons Render Bead](#) to deliver unparalleled performance and reliability. Don't settle for average quality when you can have exceptional results with Hitechcons Render Bead. Experience the confidence and peace of mind that comes with choosing the best.

[Hitechcons Render Bead](#) is an essential product to consider before starting your rendering project. This high-quality product is designed to offer a great solution for rendering corners in terms of stability and accuracy. To begin the process, you will need to ensure that the bead is cut to the correct length to fit the corner. After that, remove the protective strip to uncover the adhesive on the bead. This product is very versatile and user-friendly, allowing you to place it effortlessly wherever you need it without any complications.





To complete the process, use a trowel to apply the render onto the wall, making sure that it fully covers the bead without leaving any gaps. Once it dries, the outcome is always satisfactory, giving you the

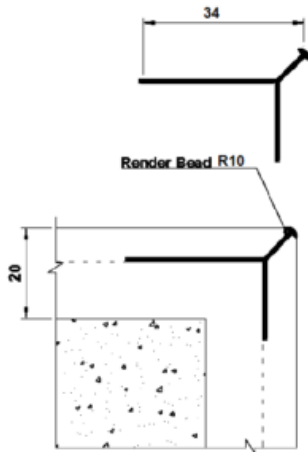
option to add superb finishing touches of your choice. Invest in the Hitechcons Render Bead for your rendering project for an outcome that is flawless, long-lasting, and offers protection to your walls.

Hitechcons Render Bead is a product that can provide several benefits when used in construction projects. Firstly, it is designed to reduce the amount of render required to cover an area, resulting in cost savings by reducing labor and material expenses. Additionally, Hitechcons Render Bead can provide a more consistent finish, and it can prevent cracking that can reduce maintenance costs over time.

However, it is crucial to consider the cost of purchasing Hitechcons Render Bead compared to traditional render materials. The cost per unit might be higher, and there may be additional costs associated with installation and training.

Overall, the cost and benefit analysis of using Hitechcons Render Bead will depend on the specific project and the construction team's needs. Careful consideration of the product's benefits and costs can help determine if it is a cost-effective solution for a particular construction project.

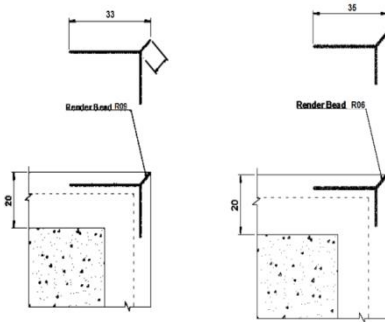
Bullnose render bead



Bullnose render bead can be used in a range of projects, including residential and commercial properties, and can be painted over to match the color of the wall or left natural for a contrasting detail.

Hitechcons Bullnose Render Bead is a type of bead commonly used in rendering projects to create smoother and rounder corners. It is particularly useful for walls with external corners as it can give the wall a more finished and polished look. The bullnose render bead is made from uPVC material and is designed to be resistant to impact and weathering. The bead is installed during the rendering process after the wall surface has been prepared and primed. The render is then applied to the wall and smoothed over the top of the bead to create a neat and tidy finish.

Sharp Render Bead



walls into aesthetically pleasing structures. The bead's sharp corner profile helps to prevent cracking and maintain the integrity of the render. It can also be used to create decorative features such as window trims, or to highlight architectural details. The product is available in a range of sizes to accommodate different wall thicknesses and is suitable for use with various types of render.

Hitechcons' Sharp Render Bead is a popular choice for projects that require rendering wall corners. One such project is the renovation of an existing building's exterior, where the Sharp Render Bead provides a crisp and clean finish. Another use is for new construction, particularly for the facade of a commercial or residential building where the Sharp Render Bead transforms plain

Render Groove



HiTechCon's uPVC render groove is a special type of trim product designed to be fixed onto rendered or plastered walls. It is manufactured from high-quality uPVC material that is durable, waterproof, and resistant to weathering. The purpose of this product is to provide a defined edge to the render, helping to create a sharp and clean

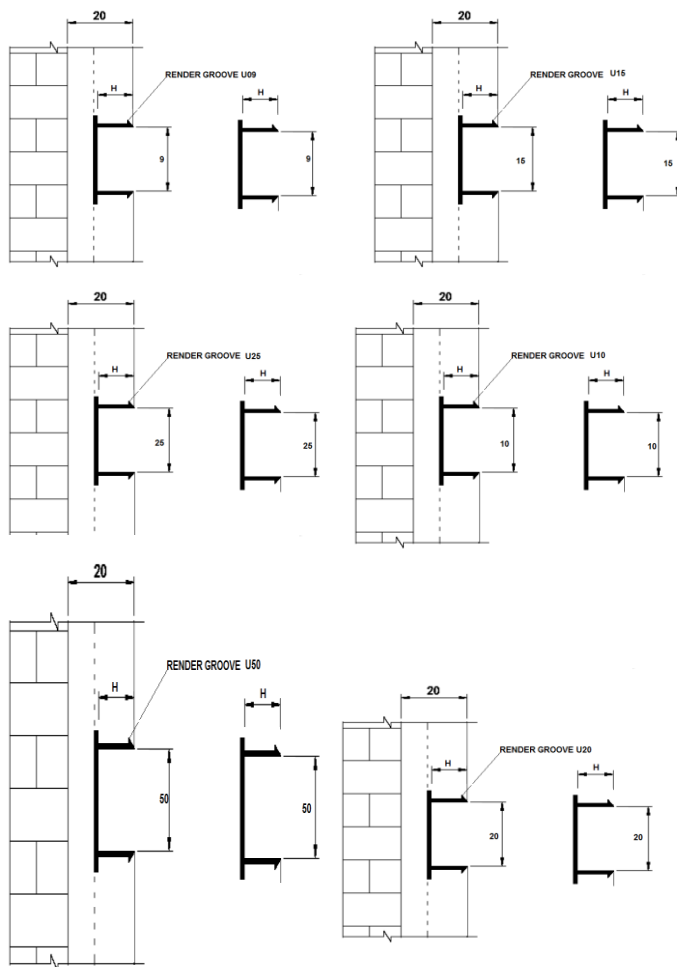
finish. The render groove is also used to protect the rendered surface from damage caused by moisture, movement, or impact.

The uPVC render groove is an essential component in any construction project as it ensures that the rendered surface looks neat and professional while providing a practical layer of protection. This product is crucial to ensuring that the render finish is of the highest quality and will remain looking good



for many years to come. By using HiTechCon's uPVC render groove, construction professionals can confidently deliver high-quality building projects that meet their clients' needs.

HiTechCons uPVC Render Groove offers several advantages over traditional rendering methods. Firstly, it is highly durable and resistant to weathering, ensuring that it maintains a neat and professional appearance for many years to come. Secondly, it is quick and easy to install, significantly reducing the time required to complete a project. Finally, it is highly adaptable and can be used on a wide range of buildings, including those with complex shapes and sizes. When compared to other methods, HiTechCons uPVC Render Groove stands out as the superior choice in terms of ease of installation, durability, versatility, and cost-effectiveness.



HiTechCons offers a wide range of uPVC Render Groove sizes to cater to different construction needs. The groove sizes range from 9mm to 50mm .

The 9mm uPVC Render Groove is perfect for light construction work, such as cladding or small-scale renovation projects. It provides a subtle texture and adds an aesthetic element to the building's exterior .

The 10mm and 15mm grooves are suitable for larger renovation projects or mid-size construction works. These grooves offer a more enhanced texture and appearance.

The 20mm, 25mm, and 30mm grooves are designed for heavy-duty construction work, such as commercial and industrial

buildings. These grooves provide a robust and visually impressive finish to the building's exterior .

Finally, the 50mm groove is the largest in the range and is perfect for large-scale construction work, offering high visibility and impact. The size ensures that the building's exterior has a grand and remarkable appearance.

UPVC Render Groove is considered better than other materials like PVC or metal due to its exceptional durability, low maintenance, and aesthetic appeal. UPVC has high resistance to weathering, corrosion, and decay which makes it durable and long-lasting. The material also does not require regular painting or sealing, making it a low maintenance option. Additionally, UPVC is available in various colors and finishes, offering a wide range of aesthetic options and enhancing the overall look of buildings.

In comparison, PVC can become brittle over time, leading to cracks and damage, while metal is highly reactive and prone to rust and corrosion. Both materials may require frequent maintenance to restore their appearance and function. Thus, UPVC Render Groove is the best option for long-lasting, attractive, and low maintenance groove systems in construction projects.

To purchase HiTechCons' uPVC render groove from Hitechcons.com, follow these simple steps:

1. Go to the Hitechcons.com website and navigate to the product page for HiTechCons' uPVC render groove.
2. Click the "Add to Cart" button to add the product to your shopping cart.
3. Review the items in your cart before proceeding to checkout.
4. Fill out your shipping and payment information.
5. Once your payment is processed, you will receive a confirmation email with your order details.
6. Your order will be shipped to your chosen address, and you should receive it within the estimated delivery time.

If you have any questions or concerns during the purchasing process, feel free to contact HiTechCons' customer service for further assistance.



8K Mirror



Hairline



Satin



Blasted



Gold Mirror



Champagne



Rose Gold



Burgundy



Black Titanium



Sapphire Blue



Pansy



Green



Gold Hairline



Champagne Hairline



Rosegold Hairline



Burgundy Hairline

HiTechCons International INC;

05 Road 19, Tan Thuan Export Processing Zone, Tan Thuan Dong Ward, District 7, Ho Chi Minh City, Vietnam- Tel +842862747983 www.hitechcons.com

Branch Ware House – International Supply

Hitech Bonded Warehouse, Tan Thuan Export Processing Zone, Tan Thuan Dong Ward, District 7, Ho Chi Minh City, Vietnam- Tel +842862702110 www.hitechcons.com